

Conveyor Type Dishwasher C44BP

(electric, right to left)



Brand

HOBART

Description

Conveyor Type Dishwasher

Model

C44BP

Orgin

China

- Application** - For dishwash room of restaurant, employee dining room, etc.
- Function** - Washing wares, such as plates, dishes, cups, glasses, large utensils, and small pieces of cutlery (such as forks, knives, spoons, chopsticks)
- Wash capacity** - 203 Racks/h (max. 3650 plates/h (10" plates), 5070 glasses/h (25 cell/rack))

- Specifications**
- Loading height: 440 mm
 - Rack size: 500×500 mm
 - Wash temperature: 55-65°C
 - Rinse temperature: 82-90°C
 - Water consumption: 432L/h
 - Wash tank volume: 87L
 - Wash arms: upper 4 / lower 4
 - Wash pump: 1.5kW
 - Tank heating: 7.5kW (60°C) / (15kW, 65°C)
 - Booster heating: 36kW
 - Total loading: 46kW (53.5kW)
 - Voltage: 380V/50Hz/3
 - Dimensions(W×D×H): 1121×768×1782mm
 - Net weight: 255kg



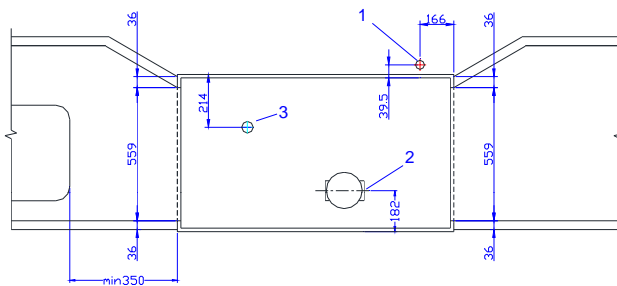
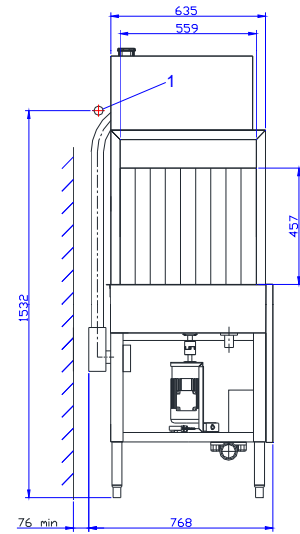
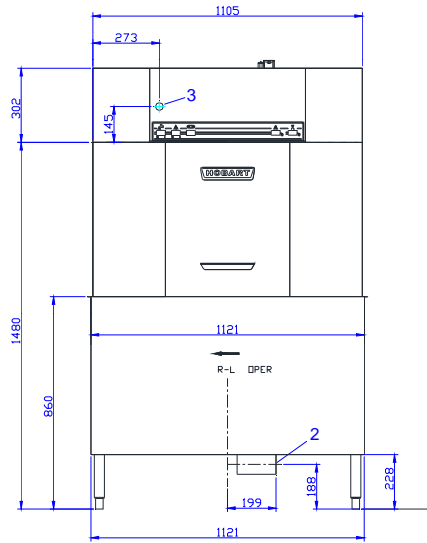
- Features & benefits**
- Easytronic and top mounted control, monitor temperatures on LED display
 - Self-flushing strainer and removable basket collect large food particles easily
 - Thermostop feature guarantees 82 final rinse
 - Anti-clogging wide angle nozzle fan, provide a substantially broader and more precise spraying pattern and outstanding washing efficiency
 - Self-draining wash pump, heavy-duty and for sanitation
 - L-form heavy wash tank design, exert wash pump performance furthest
 - Booster tank with high quality heat preservation material, reduce heat loss
 - Automatic filling water, and water level self-control, prevent dry heating
 - Automatic rinse control and autotimer shutdown, reduce energy consumption

Options:

- Dryer (dimensions: 920×762×1997mm, 9.75kW, hot air circulation 3600m³/h)

Conveyor Type Dishwasher C44BP

(electric, right to left)



Installation parameters:

water filling	pipe diameter	G3/4"
	pressure	0.1 ~ 1.5MPa
	filling temperature	10 ~ 80
	min. flow rate	432L/h
drain	pipe diameter	G2"
electrical connection	voltage	380V/50Hz/3
	total loading	46kW (53.5kW)
	fuse	70A (82A)
	cross section	25mm ² (35mm ²)
exhaust	entrance	5.7m ³ /min
	exit	11.3m ³ /min

Note:

- (a) Must install the main switch to disconnect electrical power to the machine and manual shut off valves for water.
- (b) All drain and ventilation connections must be made in accordance with national codes.
- (c) Pipework external of the machine is to be done on site.

Conveyor Type Dishwasher C44BP

(electric, left to right)



Brand

HOBART

Description

Conveyor Type Dishwasher

Model

C44BP

Orgin

China

- Application** - For dishwash room of restaurant, employee dining room, etc.
- Function** - Washing wares, such as plates, dishes, cups, glasses, large utensils, and small pieces of cutlery (such as forks, knives, spoons, chopsticks)
- Wash capacity** - 203 Racks/h (max. 3650 plates/h (10" plates), 5070 glasses/h (25 cell/rack))

- Specifications**
- Loading height: 440 mm
 - Rack size: 500×500 mm
 - Wash temperature: 55-65°C
 - Rinse temperature: 82-90°C
 - Water consumption: 432L/h
 - Wash tank volume: 87L
 - Wash arms: upper 4 / lower 4
 - Wash pump: 1.5kW
 - Tank heating: 7.5kW (60°C) / (15kW, 65°C)
 - Booster heating: 36kW
 - Total loading: 46kW (53.5kW)
 - Voltage: 380V/50Hz/3
 - Dimensions(W×D×H): 1121×768×1782mm
 - Net weight: 255kg



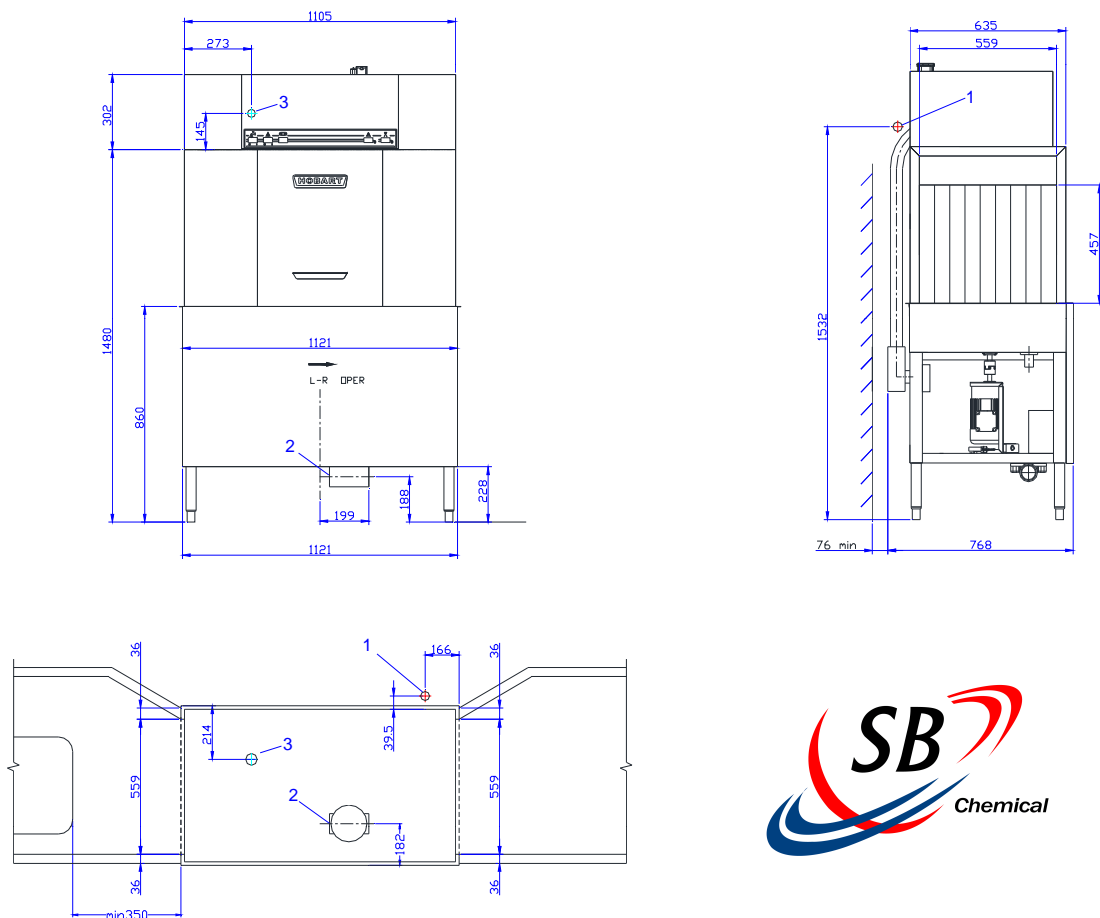
- Features & benefits**
- Easytronic and top mounted control, monitor temperatures on LED display
 - Self-flushing strainer and removable basket collect large food particles easily
 - Thermostop feature guarantees 82 final rinse
 - Anti-clogging wide angle nozzle fan, provide a substantially broader and more precise spraying pattern and outstanding washing efficiency
 - Self-draining wash pump, heavy-duty and for sanitation
 - L-form heavy wash tank design, exert wash pump performance furthest
 - Booster tank with high quality heat preservation material, reduce heat loss
 - Automatic filling water, and water level self-control, prevent dry heating
 - Automatic rinse control and autotimer shutdown, reduce energy consumption

Options:

- Dryer (dimensions: 920×762×1997mm, 9.75kW, hot air circulation 3600m³/h)

Conveyor Type Dishwasher C44BP

(electric, left to right)



Installation parameters:

water filling	pipe diameter	G3/4"
	pressure	0.1 ~ 1.5MPa
	filling temperature	10 ~ 80
	min. flow rate	432L/h
drain	pipe diameter	G2"
electrical connection	voltage	380V/50Hz/3
	total loading	46kW (53.5kW)
	fuse	70A (82A)
	cross section	25mm ² (35mm ²)
exhaust	entrance	5.7m ³ /min
	exit	11.3m ³ /min

Note:

- (a) Must install the main switch to disconnect electrical power to the machine and manual shut off valves for water.
- (b) All drain and ventilation connections must be made in accordance with national codes.
- (c) Pipework external of the machine is to be done on site.